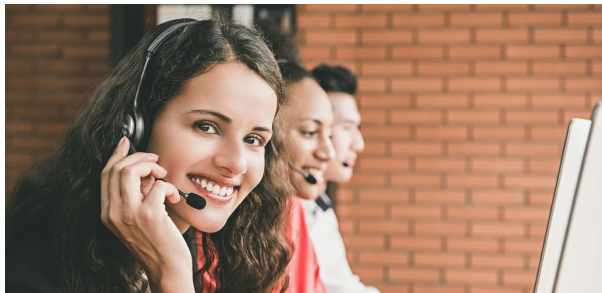


Employment Support



Remember – whatever your situation, there is support available for you. If you want to and are capable of working, there are services available that can help you find and keep a job. While not all people with epilepsy identify as having a disability, a number of New Zealand programs provide specialist support to individuals and their employers, including:

- [Employment New Zealand](#)
- [Workbridge](#) is New Zealand's largest free employment service for disabled people or those with an injury or health condition.
- [The New Zealand Government, through WINZ](#) provides funding through the work and income to contribute to the costs of making workplace changes, including buying equipment, modifications, or accessing services for people living with a disability.



0800 37 45 37



national@epilepsy.org.nz



www.epilepsy.org.nz