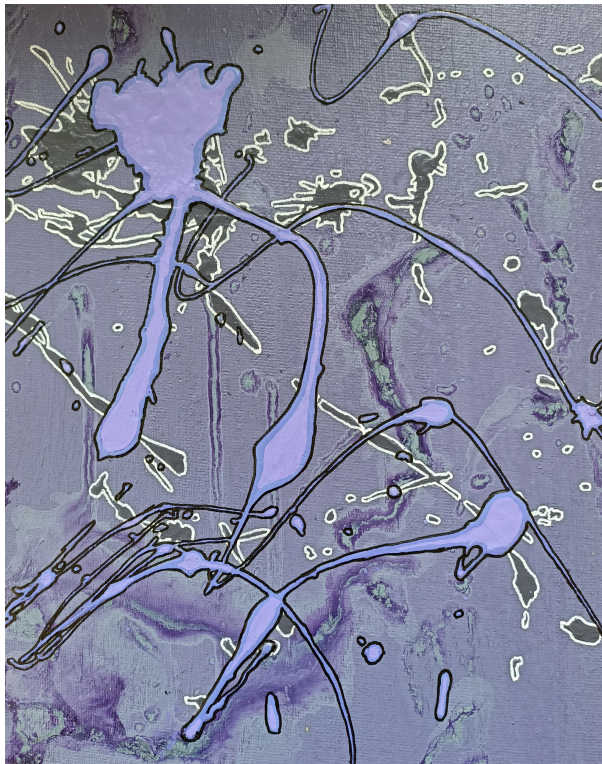


Purple Day Charity Art Auction 2024



Dance Like No One is Watching, Selene Simcox

PURPLE DAY CHARITY ART AUCTION IN PARTNERSHIP WITH RESENE

At Epilepsy New Zealand it is our mission to improve the lives of those living with epilepsy.

Purple Day helps fundraise and grow awareness of Epilepsy New Zealand services.

What is epilepsy?

The brain sends electrical messages to the body. A disruption of electrical activity in the brain can lead to a seizure. This could be a change in the person's movement, behavior, level of awareness and/or feelings. Epilepsy can be controlled with medication. Epilepsy seizures can vary greatly. Some can cause difficulty in living alone, the ability to drive, ability to work and barriers to independence and social wellbeing.

Charity Art Auction – 2024

In 2024 we ran our First Purple day Art Auction.



0800 37 45 37



national@epilepsy.org.nz



www.epilepsy.org.nz

Epilepsy New Zealand connected with artists across New Zealand and show case their work for a good cause.

Resene generously donated purple paint and canvas.

All artists were welcome to participate and donate a painting to be auctioned on Trade Me.

Thank you to the artists who donated their time and creativity to this [Purple Day](#) Fundraiser.

Please like, follow and share the auction on [Facebook](#) to raise awareness of those living with epilepsy.

The [auction](#) ended on 26th March 2024 in celebration of Purple Day.

Please read about the Art Auction in Habitat by Resene [here](#).



TATIANA VAIRERA



0800 37 45 37



national@epilepsy.org.nz

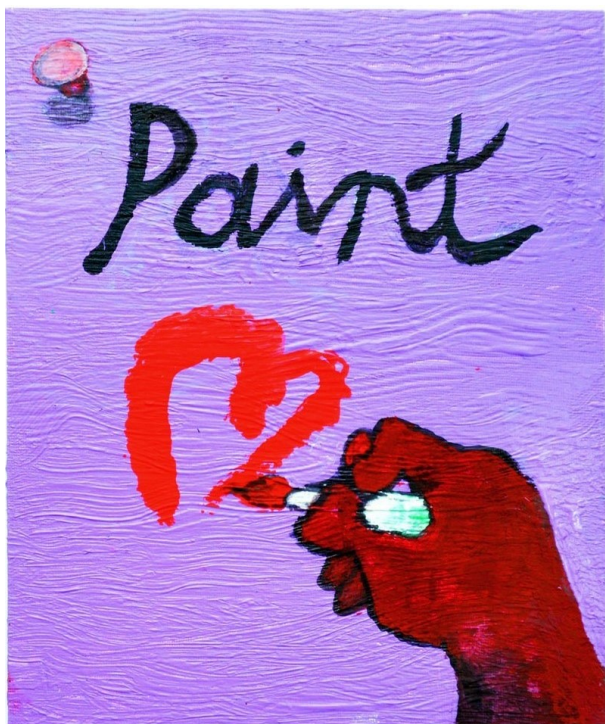


www.epilepsy.org.nz



Supporting the cause means a lot, as it creates awareness around epilepsy. I have used circles as the cells, the dark ones represent normal cells and the lighter circles represent the epilepsy present in the brain.

DIANA NG LOW



Valentine's on Velvet Wood

In the past I've worked as a creative director, working with graphic designers in the advertising industry. I'm also an illustrator who has published a comic booklet for a Training Course. Generally, I like including creative concepts in my art. This is a simple one. As shown, I've created a wooden background. Painted in purple!



0800 37 45 37

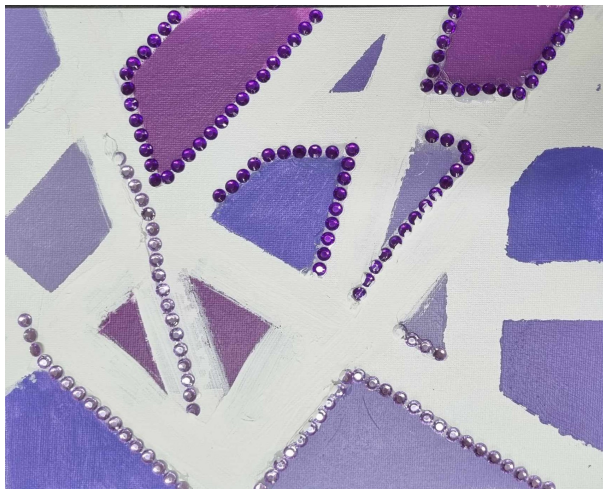


national@epilepsy.org.nz



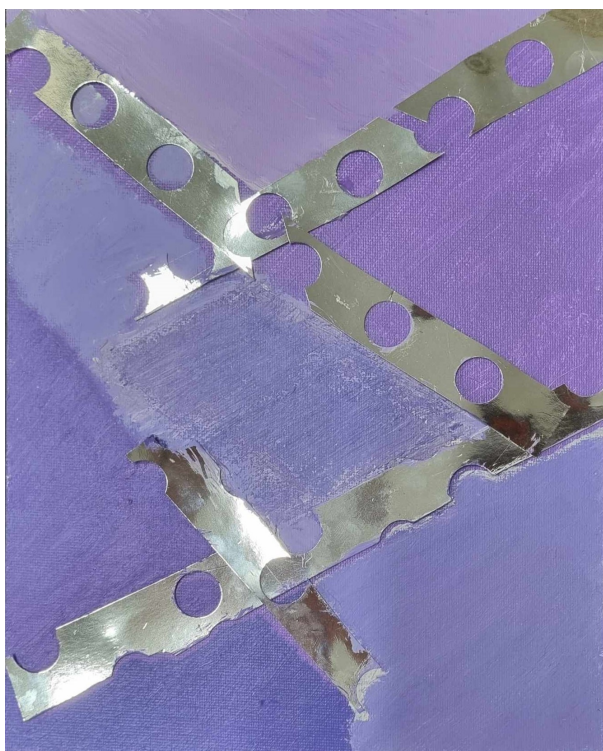
www.epilepsy.org.nz

SOFIA SIDORUK



In my art piece, I have painted different triangular shapes purple. Throughout my painting there are sparkles surrounding the triangles. In some spaces sparkles come off track representing when epilepsy is present.

SCOTT VAN DE REIT



I have created my piece to showcase the chain of thought being broken when a seizure takes place in the brain.

RAQUIEL TE KAWA



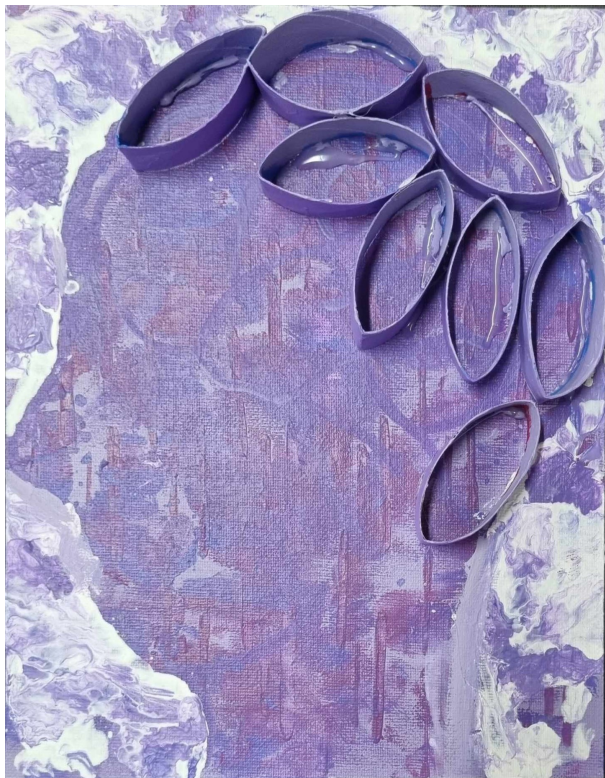
0800 37 45 37



national@epilepsy.org.nz



www.epilepsy.org.nz



I have created my epilepsy art piece using different techniques to show a seizure at hand. I have used paint blowing and added layers of paper rolls to emphasize a seizure taking place.

PAUL LEYDON



Through my art I have used blocks to show the movement of how a seizure takes place in the brain.



0800 37 45 37



national@epilepsy.org.nz



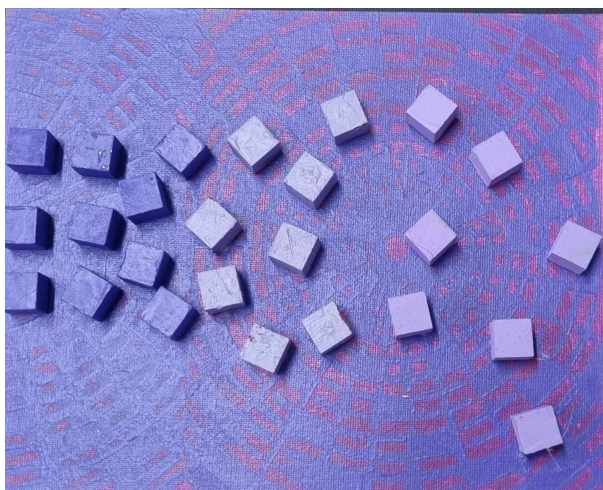
www.epilepsy.org.nz

CECILY CONLEY



I choose purple and green because together they dance, showing the elasticity of colors and shapes, like a fiesta in a canvas!

NICHOLAS JOHNSON



An awesome cause to contribute to. In my art piece, the wooden cubes represent brain cells. Healthy brain cells are joined together, but with epilepsy cells come apart due to a seizure.

NALIYAH TE-MAKI



0800 37 45 37



national@epilepsy.org.nz



www.epilepsy.org.nz



A cause close to my heart. I have used a fading technique with the head, to show the confusion going on in the brain when a seizure is happening.

META ASSINK



I paint whimsical animals as a reminder that moments of reflection, playfulness, and humor can be created – even on some very challenging days.



0800 37 45 37



national@epilepsy.org.nz



www.epilepsy.org.nz

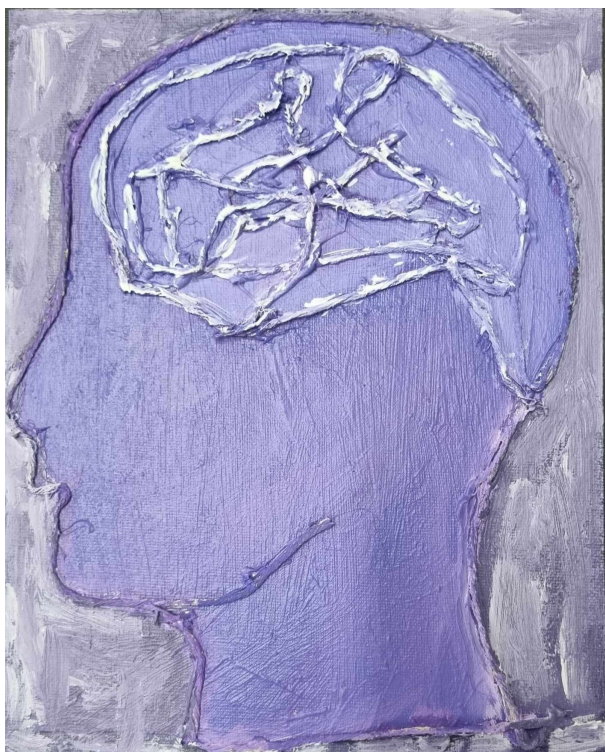
MELISSA HICKS



Fiore Viola

This is an important cause to me as my 6 year old has epilepsy and I would love to raise some money and awareness

LUKE WRIGHT



I have used string to outline a person's head and brain. The string jumbled up represents when a terrible seizure takes place in the brain.



0800 37 45 37

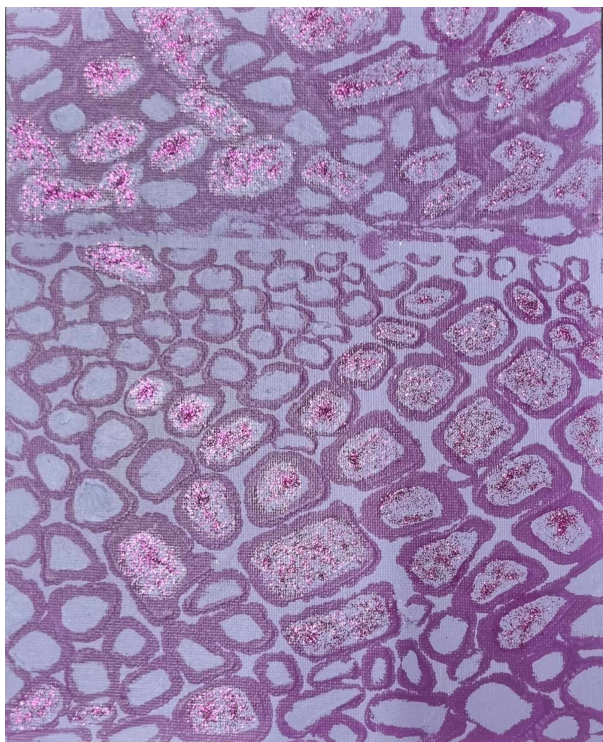


national@epilepsy.org.nz



www.epilepsy.org.nz

LISA KIERNAN



I have painted a pattern which looks like brain cells moving in the brain. The sparkles separating from some of the cells shows the start of epilepsy taking place.

FRIDA



Jelly Fish by Frida



0800 37 45 37



national@epilepsy.org.nz



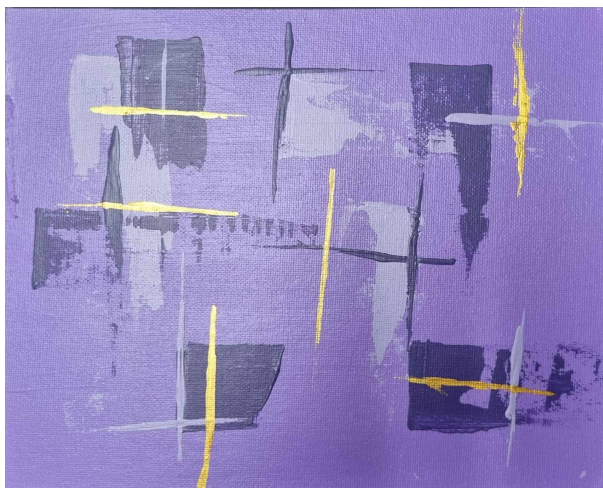
www.epilepsy.org.nz

LAUREL STEPHENS



Brain Burps & Blips

KAREN CABEZAS



I have created my art piece using abstract art to create an awareness around epilepsy.

ENRICO MONTECLARO



0800 37 45 37



national@epilepsy.org.nz



www.epilepsy.org.nz



I'm very happy in taking part creating awareness for epilepsy through my art. The jigsaw pieces as the brain, then breaking apart shows a seizure taking place in the brain.

CAROLINE EASTALL



I have used printed words fading in my abstract piece to show the effects of epilepsy.



0800 37 45 37



national@epilepsy.org.nz



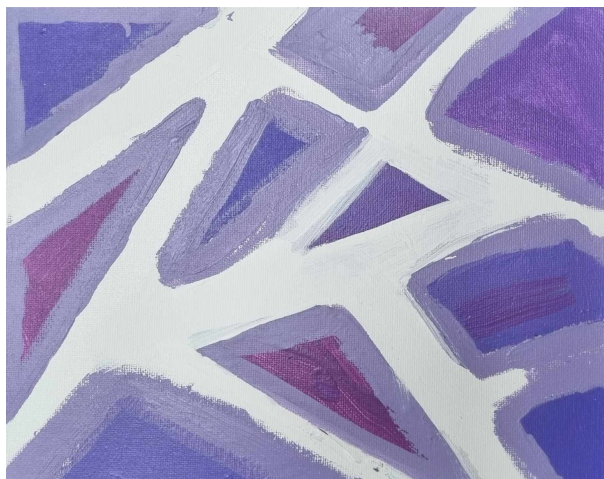
www.epilepsy.org.nz

TIM WIGHTMAN



Tim Wightman

CARLO MCILVRIDE



In my abstract piece, I have painted different shades of purple on the shattered glass pattern. This shows a seizure in motion.

BRENT MILBURN



0800 37 45 37



national@epilepsy.org.nz



www.epilepsy.org.nz



I have chosen clock pieces to show epilepsy in action. A clock piece falling off shows a seizure taking place. This shows the impact of a seizure on the brain.

FRANZESKA POUND



Wellingtons south coast, a walk I do often and where I find a lot of my inspiration.



0800 37 45 37

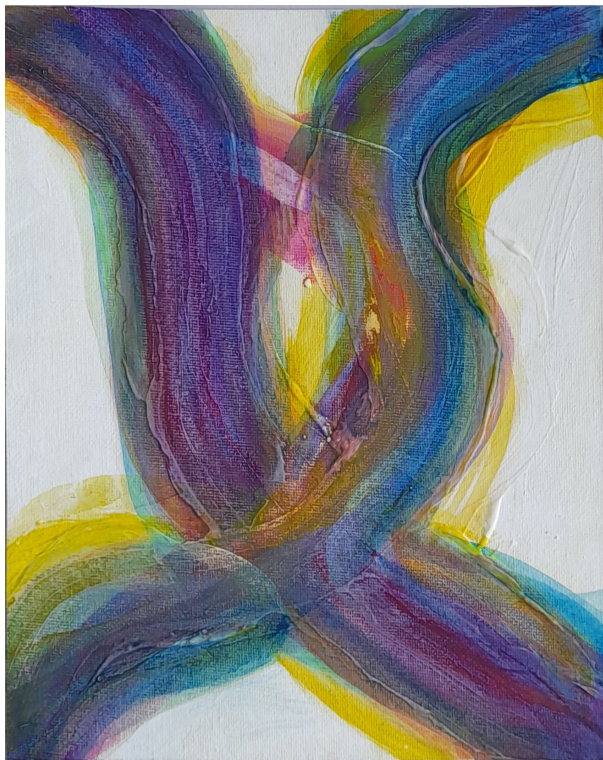


national@epilepsy.org.nz



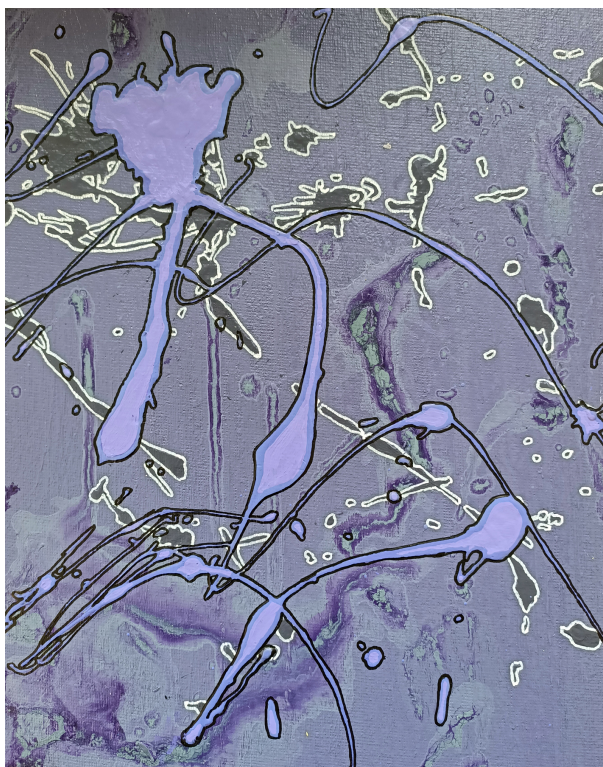
www.epilepsy.org.nz

AGATA HUBBARD



As an artist I create mostly abstract paintings, which are based on multidimensional layers of nature and human mind

SELENE SIMCOX



Remember to dance and feel the energy of life. Paint has its own energy too. It all reminds you to keep dancing like no one is watching.



0800 37 45 37



national@epilepsy.org.nz



www.epilepsy.org.nz